

**Vermont Secretary of State  
Office of Professional Regulation**

**Twenty-Ninth Annual Report  
on  
Professional Licensing**

**Deborah L. Markowitz, Secretary of State**

**Christopher D. Winters, Director**

**As of: November 2010**

**Vermont Secretary of State  
Office of Professional Regulation**

**Twenty-Ninth Annual Report  
on  
Professional Licensing**

**Published by:**

**Deborah L. Markowitz, Secretary of State**

**Christopher D. Winters, Director**

**A note to the reader:**

This Director's Annual Report for the Office of Professional Regulation (OPR, Office) covers Fiscal Year 2010 - July 1, 2009 through June 30, 2010. It contains the Director's report as well as a summary of the activity of the regulatory programs for the 45 professions supported and managed by OPR. You will also find tables and charts providing a report on the activities, revenues, and expenditures for all regulatory programs administered under the jurisdiction of OPR.

Information relating to specific professions can be accessed via our web page: <http://www.vtprofessionals.org>  
Comments and suggestions are welcome. Write or call the Director, Office of Professional Regulation, Secretary of State, National Life Bldg., North FL2, Montpelier, Vermont 05620-3402, (802) 828-1505 or e-mail to [opr@sec.state.vt.us](mailto:opr@sec.state.vt.us).

## TABLE OF CONTENTS

Director's Report .....	1
<b><u>Appendices:</u></b>	
Appendix A: Graph - Complaint Activity Overview.....	2
Appendix B: Complaint Activity for the Fiscal Year .....	3
Appendix C: Graph - Complaint Activity .....	4
Appendix D: Pending Cases at the Start of the Fiscal Year .....	5
Appendix E: Graph - Pending Cases.....	6
Appendix F: New Cases Received for the Fiscal Year.....	7
Appendix G: Graph - New Cases Received .....	8
Appendix H: Conduct Cases Concluded Without Discipline for the Fiscal Year .....	9
Appendix I: Graph – Conduct Cases Concluded Without Discipline .....	10
Appendix J: Cases Concluded With Discipline for the Fiscal Year .....	11
Appendix K: Graph - Cases Concl uded With Discipline .....	12
Appendix L: Licensees By Profession.....	13
Appendix M: Receipts/Expenditures by Profession .....	16
Appendix N: Roster of Board/Commission/Advisor Members.....	17

This report contains information regarding the following professions:

Accountants Acupuncturists Alcohol & Drug Counselors Architects Athletic Trainers Audiologists Auctioneers Barbers & Cosmetologists Body Piercers Boxing Chiropractors Crematoriums Dental Examiners Dietitians Electrologists	Professional Engineers Funeral Service Hearing Aid Dispensers *Landscape Architects Land Surveyors Marriage & Family Therapists Clinical Mental Health Counselors Midwives, Licensed Motor Vehicle Racing Naturopaths Nursing Nursing Home Administrators Occupational Therapists Opticians Optometrists	Osteopathic Physicians and Surgeons Pharmacists Physical Therapists Private Investigative/Security Svcs Psychoanalysts Psychologists Psychotherapists, Non-licensed Radiologic Technologists Real Estate Appraisers Real Estate, Brokers & Salespersons Respiratory Care Practitioners Social Workers, Clinical Speech Language Pathologists Tattooists Veterinarians *New 2010
--	--	--

## Director's Report Fiscal Year 2010

Fiscal year 2010 has been an extremely busy one for OPR. We continue to see a rise in the number of professional conduct complaints filed in our office and the electronic licensing project (eLicense) left us with no shortage of business processes to explore and improve. Because eLicense is fully customizable, we have spent the first year with this new tool very much engaged in tweaking the existing processes and configurations of the system to gain efficiencies and find the best use of the product. We are mostly settled in and quite adept at using this system after a year, yet this powerful program still gives us the option of getting more and more out of it as we gain a greater understanding of how we can use it for professional regulation and public protection.

Online renewals are now a reality for all professions. This service is convenient for the licensees we serve and helps reduce the OPR staff workload. Auto-generated letters, increased use of digital documents, and automated reports from eLicense have all contributed to a higher level of functionality and efficiency here at OPR. As I look back on my 13 year career here, I am amazed by how far we have come in that time with improved processes and new technology.

Regarding unprofessional conduct complaints and caseloads, eLicense has allowed us to more accurately track our cases, the time we spend on them, and our productivity. Below you will see the data on cases opened, investigated, and prosecuted since 1999. It is a dramatic increase, especially in the last year. Fortunately, we have an excellent team of investigators, prosecutors, and case management staff who have risen to the occasion and are handling many more cases with the same resources. Additional restructuring of staff responsibilities in the coming year is needed to adapt to this growing caseload. eLicense has helped us to more effectively identify and manage the workload.

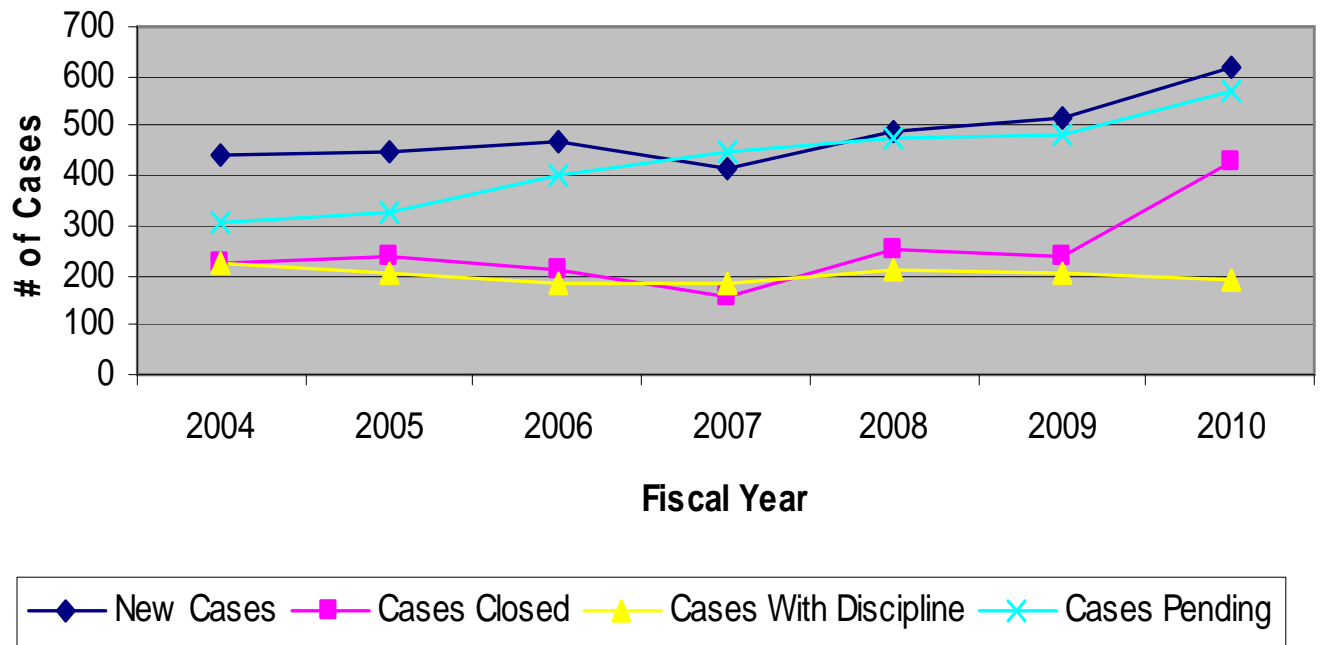
<b>Calendar Year</b>	<b>Complaints Rec'd</b>
1999	293
2000	358
2001	394
2002	409
2003	416
2004	438
2005	460
2006	421
2007	418
2008	507
2009	562
2010	727

Last of all, with the new year will come a new administration. All of us at OPR are thankful for the leadership and vision of outgoing Secretary of State Markowitz and the support she has given us over her 12 year tenure. She has been an integral part of the positive changes that have been made in OPR and has done an incredible service to the professionals we regulate and the public we serve. I would also like to recognize and express my gratitude to Deputy Secretary Bill Dalton. Without his knowledge and guidance on the “nuts and bolts” of state government, many of our goals could not have been attained. They leave this office in great shape for the next capable administration to take over, and for that we all owe them our sincere thanks.

Respectfully submitted,

Christopher D. Winters, Director  
Office of Professional Regulation

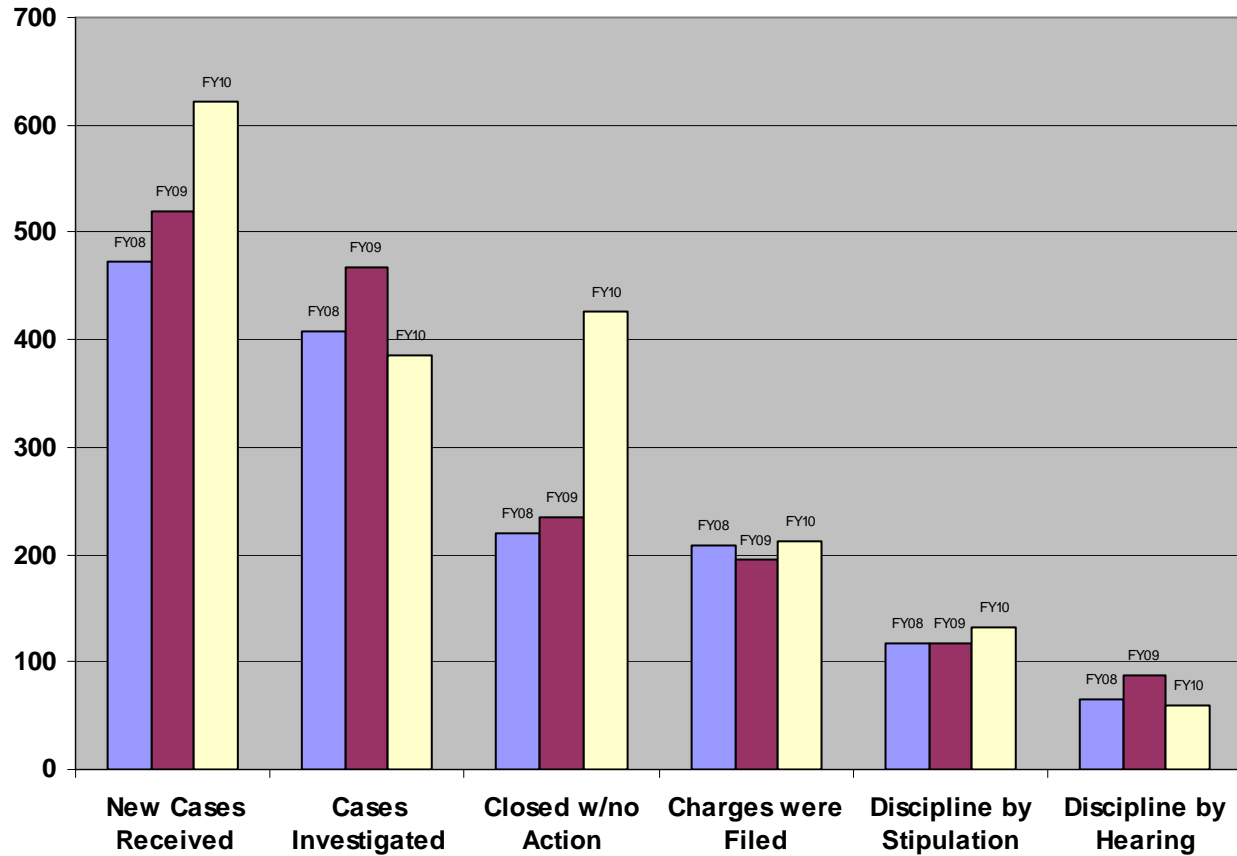
# Appendix A: Complaint Activity Overview For Fiscal Years 2004 through 2010



**Appendix B: Complaint Activity for Fiscal Year 2010**

	New Cases Received	Cases Investigated	Closed without Discipline	Charges Filed	Summary Suspension	Discipline Imposed by Stipulation	Discipline Imposed after Hearing
Accountant	11	6	3	2	0	0	0
Acupuncturist	0	0	0	0	0	0	0
Alcohol & Drug Counselor	0	1	1	1	0	0	0
Allied Mental Health	8	6	11	0	0	0	1
Architect	6	2	3	2	0	0	0
Athletic Trainer	1	0	0	0	0	0	0
Auctioneer	5	6	4	2	0	0	0
Audiologist	0	0	0	0	0	0	0
Boxing	0	0	0	0	0	0	0
Chiropractor	1	4	5	0	0	0	0
Clinical Social Work	6	6	3	1	0	2	0
Cosmetology & Barber	33	25	22	24	0	6	2
Dentist	32	22	11	8	1	4	2
Dietitian	1	0	0	0	0	0	0
Electrologist	0	0	1	0	0	0	0
Engineer, Professional	6	4	5	2	0	0	4
Funeral Service	5	18	3	16	0	0	0
Hearing Aid Dispenser	3	2	2	2	0	0	0
Land Surveyor	6	5	5	2	0	1	0
Landscape Architect	PNR	PNR	PNR	PNR	PNR	PNR	PNR
Midwife, Licensed	0	2	2	0	0	0	0
Motor Vehicle Racing	0	0	0	0	0	0	0
Naturopathic Physician	1	0	1	0	0	0	0
Nursing	310	183	192	99	6	66	38
Nursing Home Administrator	11	11	2	7	0	2	0
Occupational Therapist	1	1	3	0	0	0	0
Optician	0	0	0	0	0	0	0
Optometry	2	1	2	0	0	0	1
Osteopathic Physician	17	5	7	0	0	0	0
Pharmacist/Pharmacy	57	27	60	16	2	33	7
Physical Therapist	6	5	9	1	0	0	0
Private Detective/Security	10	5	8	3	0	6	0
Psychoanalyst	0	0	0	0	0	0	0
Psychologist	14	5	5	1	0	0	0
Radiologic Technologist	0	0	0	1	0	1	1
Real Estate Appraiser	8	6	2	6	0	1	0
RE Broker/Salesperson	41	18	30	10	1	3	1
Respiratory Care Therapist	1	1	1	1		2	2

## Appendix C: Historical Data - Detail of Complaint Activity for Fiscal Years 2008 through 2010



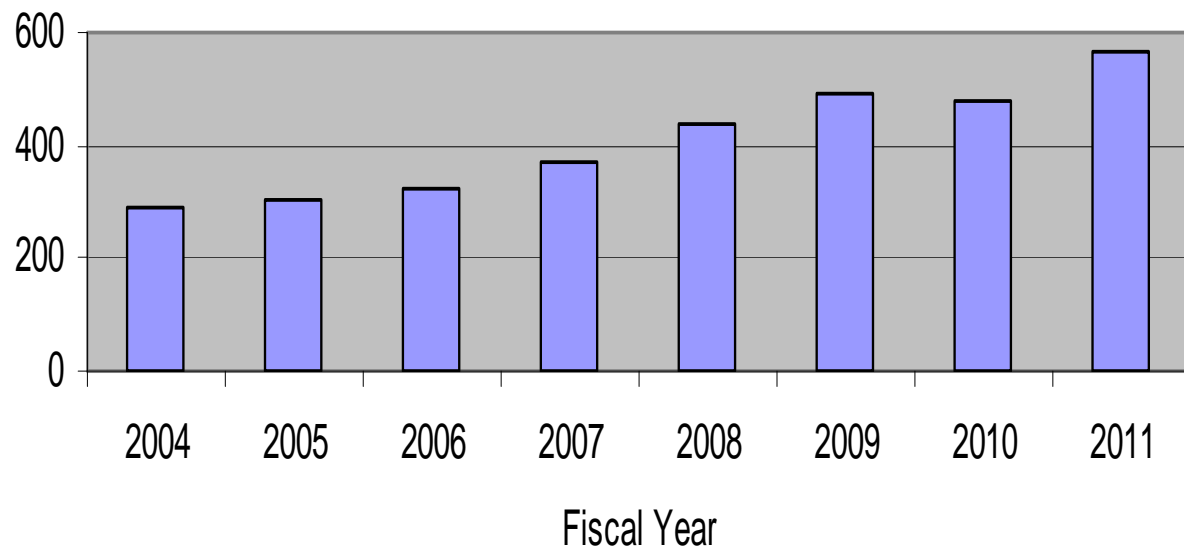
### Appendix D: Historical Data of Pending Cases at the Start of the Fiscal Year

	2004	2005	2006	2007	2008	2009	2010	2011
Accountant	10	1	4	9	18	3	8	10
Acupuncturist	0	0	4	3	3	4	0	0
Allied Mental Health	5	5	11	3	9	12	12	6
Architect	4	1	3	6	4	3	2	6
Athletic Trainer	0	0	0	1	0	0	0	1
Auctioneer	3	1	2	1	1	4	2	5
Audiologist	PNR	PNR	0	0	0	0	0	0
Boxing	0	0	0	0	0	0	0	0
Chiropractor	7	0	4	1	1	0	5	0
Cosmetologist	10	6	4	24	31	53	49	43
Drug/Alcohol Counselor	4	5	2	6	4	5	5	3
Dentist	37	25	29	14	16	11	18	31
Dietitian	0	0	0	0	0	0	0	1
Electrologist	0	0	0	0	0	1	0	0
Engineer, Professional	6	2	6	5	8	4	2	8
Funeral Service	8	8	7	6	9	20	19	13
Hearing Aid Dispenser	0	0	1	0	0	0	0	2
Landscape Architect	PNR	PNR	PNR	PNR	PNR	PNR	PNR	PNR
Land Surveyor	2	1	2	3	6	8	9	10
Midwife, Licensed	2	5	3	4	4	5	1	0
Motor Vehicle Racing	0	0	0	0	0	0	0	0
Naturopathic Physician	0	0	0	0	1	0	0	1
Nursing	99	102	94	115	125	143	209	252
Nursing Home Administrator	3	4	2	4	6	4	11	18
Occupational Therapist	1	1	0	2	0	1	1	0
Optician	1	0	0	0	0	2	0	0
Optometry	2	1	3	1	0	2	0	1
Osteopathic Physician	3	5	6	4	4	5	2	12
Pharmacist/Pharmacy	12	25	39	28	65	84	50	44
Physical Therapist	0	0	0	4	4	2	3	4
Private Detective/Security Services	3	20	11	20	21	29	4	8
Psychoanalyst	1	1	1	2	1	0	0	0
Psychologist	6	4	4	2	1	2	3	13
Radiologic Technologist	1	2	8	3	4	6	2	1
Real Estate Appraiser	13	15	15	21	14	11	8	15
Real Estate Broker/Salesperson	28	51	49	61	55	33	25	37
Respiratory Care Therapist	PNR	0	3	2	4	7	3	1



## Appendix E: Historical Data

### Pending Cases at the Start of the Fiscal Year

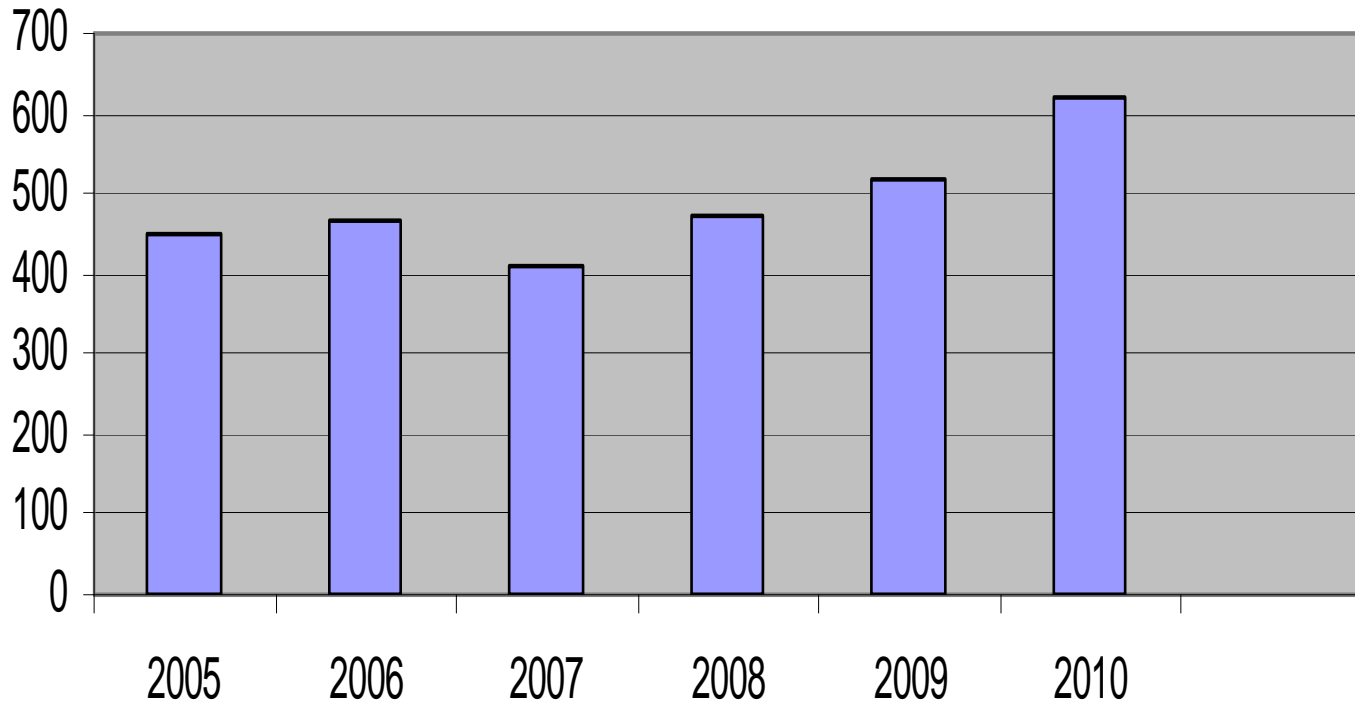


**Appendix F: Historical Data of New Cases Received  
For Fiscal Years 2005 through 2010**

	2005	2006	2007	2008	2009	2010
Accountant	8	12	21	12	7	11
Acupuncturist	5	1	4	2	0	0
Allied Mental Health	8	2	8	14	9	8
Architect	6	9	1	3	3	6
Athletic Trainer	0	1	0	1	0	1
Auctioneer	3	1	0	5	1	5
Audiologist	1	1	0	0	0	0
Boxing	0	0	0	0	0	0
Chiropractor	6	3	2	2	4	1
Cosmetologist	12	34	31	50	35	33
Drug /Alcohol Counselor	4	5	2	4	2	0
Dentist	32	26	13	18	21	32
Dietitian	0	0	0	0	0	1
Electrologist	0	2	0	1	0	0
Engineer, Professional	7	6	6	1	8	6
Funeral Service	2	1	3	15	5	5
Hearing Aid Dispenser	1	0	0	0	1	3
Land Surveyor	9	6	6	5	5	6
Landscape Architect	PNR	PNR	PNR	PNR	PNR	PNR
Midwife, Licensed	1	4	0	1	1	0
Motor Vehicle Racing	0	0	0	0	0	0
Naturopathic Physician	0	0	1	0	1	1
Nursing	139	160	129	149	282	310
Nursing Home Administrator	3	3	4	4	8	11
Occupational Therapist	1	3	0	2	2	1
Optician	0	0	0	0	0	0
Optometrist	3	1	1	1	1	2
Osteopathic Physician	9	5	4	3	2	17
Pharmacist/Pharmacy	57	46	78	75	57	57
Physical Therapist	3	3	7	1	7	6
Private Detective/Security Services	8	17	12	23	5	10
Psychoanalyst	0	1	0	0	0	0
Psychologist	8	6	6	9	3	14
Radiologic Technologist	9	2	2	4	2	0
Real Estate Appraiser	9	14	4	7	7	8
Real Estate Broker/Salesperson	69	66	39	26	7	41
Respiratory Care Therapist	4	0	4	5	3	1
Social Worker, Clinical	2	6	4	3	5	6
Tattooist/Body Piercer	2	14	7	12	13	10
Veterinarian	15	6	12	15	12	8
<b>TOTAL</b>	<b>448</b>	<b>467</b>	<b>411</b>	<b>473</b>	<b>519</b>	<b>621</b>

PNR = Previously Not Regulated

**Appendix G: Historical Data**  
**New Cases Received For Fiscal Year 2005 through 2010**

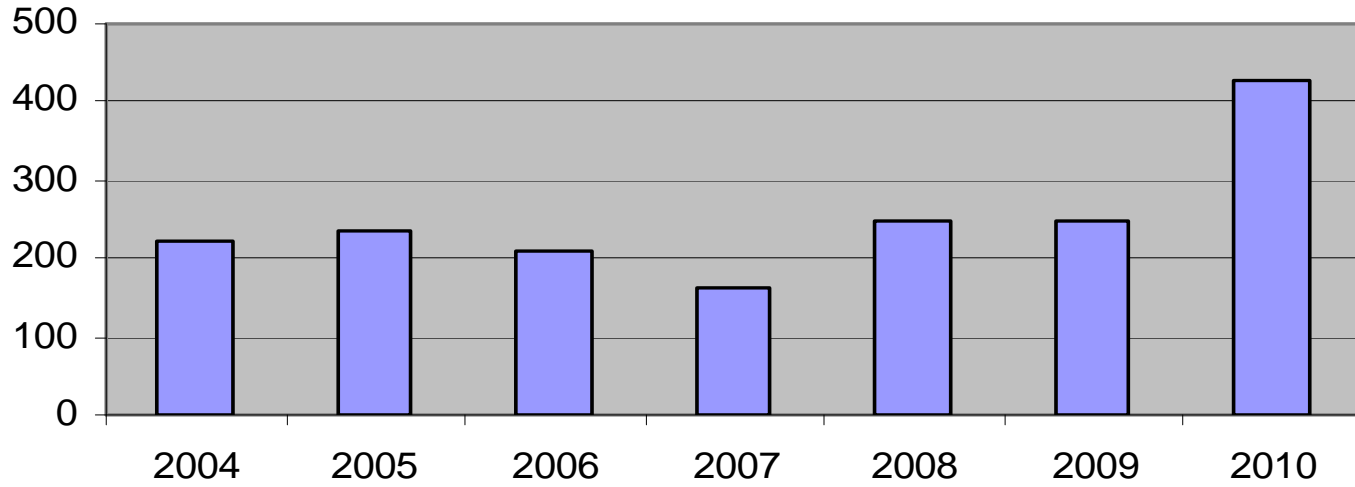


**Appendix H: Historical Data - Conduct Cases Concluded Without Discipline  
For Fiscal Years 2004 through 2010**

	2004	2005	2006	2007	2008	2009	2010
Accountant	8	1	4	2	21	6	3
Acupuncturist	0	1	0	2	0	2	0
Allied Mental Health	4	1	8	2	9	4	11
Architect	4	3	3	2	3	3	3
Athletic Trainer	0	0	0	1	0	0	0
Auctioneer	3	2	1	0	1	2	4
Audiologist	PNR	1	1	0	0	0	0
Boxing	0	0	0	0	0	0	0
Chiropractor	5	1	3	2	1	1	5
Cosmetologist	16	11	5	5	14	23	22
Drug/Alcohol Counselor	4	5	0	1	2	2	1
Dentist	19	20	25	6	12	16	11
Dietitian	0	0	0	0	0	0	0
Electrologist	0	0	2	0	0	0	1
Engineer, Professional	4	4	3	0	4	3	5
Funeral Service	4	2	2	0	4	1	3
Hearing Aid Dispenser	0	0	0	0	0	0	2
Land Surveyor	5	3	8	3	2	5	5
Landscape Architect	PNR	PNR	PNR	PNR	PNR	PNR	0
Midwife, Licensed	0	3	3	0	0	1	2
Motor Vehicle Racing	0	0	0	0	0	0	0
Naturopathic Physician	1	1	2	0	1	0	1
Nursing	44	32	45	43	45	84	192
Nursing Home Administrator	3	2	1	1	3	1	2
Occupational Therapist	0	1	0	2	1	1	3
Optician	3	1	0	0	1	0	0
Optometrist	4	1	1	2	1	0	2
Osteopathic Physician	3	7	4	3	2	2	7
Pharmacist/Pharmacy	14	23	28	25	30	28	60
Physical Therapist	1	1	2	5	3	0	9
Private Detective/Security Services	6	3	4	4	12	5	8
Psychoanalyst	0	0	0	0	1	0	0
Psychologist	9	7	5	3	8	8	5
Radiologic Technologist	1	0	3	0	1	2	0
Real Estate Appraiser	14	7	5	7	6	5	2
Real Estate Broker/Salesperson	20	67	30	28	39	12	30
Respiratory Care Therapist	PNR	1	1	1	2	0	1
Social Worker	3	5	1	4	2	1	3
Tattooist/Body Piercer	2	2	4	5	5	9	12
Veterinarian	17	16	7	4	10	8	11
<b>TOTAL</b>	<b>221</b>	<b>235</b>	<b>211</b>	<b>163</b>	<b>246</b>	<b>235</b>	<b>426</b>

PNR = Previously Not Regulated

**Appendix I: Historical Data - Conduct Cases Concluded Without Discipline For Fiscal Years 2004 through 2010**

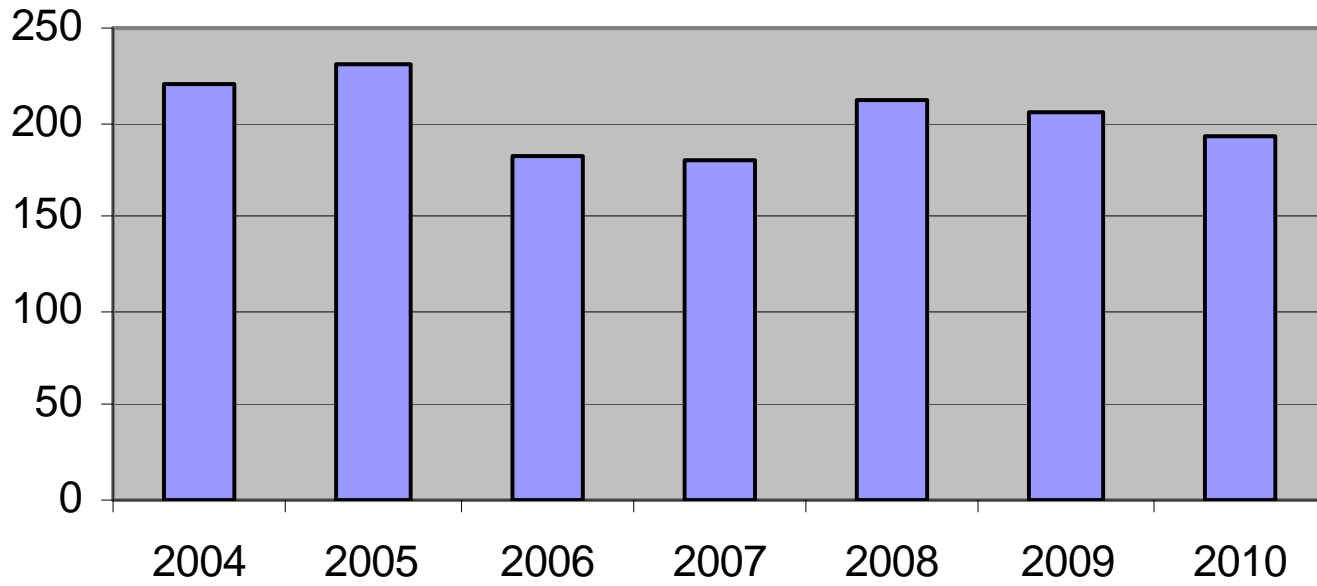


**Appendix J: Historical Data - Conduct Cases Concluded  
With Disciplinary Action for Fiscal Years 2004 through 2010**

	2004	2005	2006	2007	2008	2009	2010
Accountant	1	4	2	9	8	7	0
Acupuncturist	0	0	2	2	0	0	0
Allied Mental Health	3	1	2	1	4	5	1
Architect	0	1	2	1	1	1	0
Athletic Trainer	0	0	0	0	1	0	0
Auctioneer	2	0	1	0	1	0	0
Audiologist	PNR	0	0	0	0	0	0
Boxing	0	1	0	0	0	0	0
Chiropractor	5	1	2	0	2	0	0
Cosmetologist	12	3	9	14	15	17	8
Drug/Alcohol Counselor	1	2	1	3	1	1	0
Dentist	22	8	13	5	12	3	6
Dietitian	0	0	0	0	0	0	0
Electrologist	0	0	0	0	0	0	0
Engineer, Professional	4	1	2	2	1	4	4
Funeral Service	1	2	0	0	0	1	0
Hearing Aid Dispenser	0	0	1	0	0	0	0
Land Surveyor	0	3	1	0	1	1	1
Landscape Architect	PNR	PNR	PNR	PNR	PNR	PNR	0
Midwife, Licensed	1	0	0	0	0	0	0
Motor Vehicle Racing	0	0	0	0	0	0	0
Naturopathic Physician	0	0	0	0	0	0	0
Nursing	127	115	92	95	104	107	104
Nursing Home Administrator	1	3	0	0	3	1	2
Occupational Therapist	1	1	0	0	0	1	0
Optician	0	0	0	0	0	0	0
Optometrist	0	0	1	0	0	0	1
Osteopathic Physician	0	1	3	1	0	1	0
Pharmacist/Pharmacy	12	20	18	16	27	11	40
Physical Therapist	0	2	0	2	0	1	0
Private Detective/Security Services	2	14	3	3	6	6	6
Psychoanalyst	0	0	0	0	0	0	0
Psychologist	3	1	3	5	1	1	0
Radiologic Technologist	0	3	3	2	1	1	2
Real Estate Appraiser	4	4	2	2	4	0	1
Real Estate Broker/Salesperson	13	9	12	10	10	26	4
Respiratory Care Therapist	PNR	0	0	1	0	3	4
Social Worker, Clinical	2	1	0	1	3	1	2
Tattooist/Body Piercer	2	1	5	6	4	4	2
Veterinarian	2	1	3	0	1	2	4
TOTAL	221	203	183	181	211	206	192

PNR = Previously Not Regulated

**Appendix K: Historical Data - Conduct Cases  
Concluded With Disciplinary Action for Fiscal Years  
2004 - 2010**



**Appendix L: Licensees By Profession  
For Fiscal Years 2007 through 2010**

Profession	FY07	FY08	FY09	FY10
Accountants, Certified Public	1,160	1,153	1,076	1,206
Accountants, Registered Public	7	7	6	6
Accountancy Firms	288	280	255	283
Acupuncturist	151	138	154	155
Acupuncturist - Detoxification Technician	PNR	7	8	8
Architects	1,021	1,132	1,087	883
Athletic Trainers	103	120	113	116
Auctioneers	209	222	210	187
Barbers	142	147	141	131
Barber - Apprentice				5
Barber Shops	72	73	73	65
Boxing	0	0	1	1
Boxing Manager				1
Chiropractic	239	250	244	237
Chiropractic - Intern				1
Cosmetologists	3,043	2,947	3,158	1,118
Costmetologist - Apprentice				22
Cosmetolgy Shops	799	774	817	789
Cosmetology Schools	4	4	4	2
Crematory Establishments	9	9	9	9
Cosmetology - Manicurists	254	244	260	232
Cosmetology - Manicurists Apprentice				16
Cosmetology - Estheticians	137	151	172	176
Cosmetology - Estheticians Apprentice				2
Dentists	530	480	454	503
Dentist - Pro Bono				7
Dentist - Transient Practice Permit				1
Dental Hygienists	700	672	636	696
Dental Assistants - Certified	124	112	93	108
Dental Assistants - Traditional	737	665	553	709
Dietitians	106	100	115	117
Electrologist	29	31	25	25
Electrolysis Shops	24	25	21	18
Engineers, Professional	3,689	3,457	3,879	3,762
Engineering Interns	1,699	1,789	1,874	1,822
Funeral Directors	135	124	123	125
Funeral Establishments	61	60	58	57
Funeral, Removal Personnel	73	74	63	72
Embalmers	98	92	86	89
Hearing Aid Dispensers	38	38	33	37
Ionizing Radiation Privileges (Physicians)				229
Land Surveyors	231	238	224	217
Landscape Architect	PNR	PNR	PNR	18
Marriage & Family Therapists	36	40	44	45
Mental Health Counselor, Clinical	505	548	556	561
Midwife, Licensed	21	27	25	16
Motor Vehicle Racing	14	15	17	
Unlimited Event Permit - Auto/Truck				8
Annual Event Permit - Auto/Truck				5
Annual Event Permit - Motorcycle				1
Naturopathic Physician	130	154	154	187
Nurses, Registered	12,007	17,287	16,814	20,224
Nurse, Registered Practitioner with Advanced Practice	479	536	488	538
Nurse, Registered Practitioner with Advanced Practice - Pro Bono				2
Nurse, Registered Practitioner with Advanced Practice - Temp Permit				1
Nurses, Licensed practical	2,222	2,107	2,409	2,149



**Appendix L: Licensees By Profession  
For Fiscal Years 2007 through 2010**

Profession	FY07	FY08	FY09	FY10
Opticians	104	92	101	97
Optician Trainee	38	15	21	20
Optometry	108	97	111	107
Osteopaths	104	113	114	126
Osteopath Limited Temporary	12	10	7	14
Pharmacists	904	898	908	978
Pharmacy, Intern				260
Pharmacy, Institutional	18	17	17	17
Pharmacy, Investigation & Research Project				2
Pharmacy Preceptor				146
Pharmacy, Retail	174	135	139	138
Pharmacy, Retail Temporary License				1
Pharmacy, Home Infusion Pharmacy				2
Pharmacy, Remote Pilot Project				1
Pharmacy, Wholesale Drug Outlet	553	533	484	581
Pharmacy, Drug Research Programs	1	1	1	
Pharmacy, Non-Resident Pharmacy	260	277	258	341
Pharmacy, Telepharmacy				60
Pharmaceutical Manufacturer	1	1	2	2
Pharmacy Technicians	1,138	1,354	1,082	1,554
Physical Therapists	918	983	1,000	969
Physical Therapists Assistants	168	186	192	186
Private Investigative & Security Agency	31	38	43	19
Private Investigative & Security Agency - Sole Proprietor				3
Private Investigative Agency				49
Private Investigative Agency - Sole Proprietor				12
Security Guard Agency	20	22	17	22
Detective/Security Agency	16	17	17	
Private Investigator/Security Guard				134
Investigative/Security Registered Employee	674	900	672	866
Investigative/Security Registered F/T Employee				27
Investigative/Security Registered P/T Temporary Employee				29
Licensed Firearms Training Instructor				10
Psychoanalysts	76	79	62	55
Psychologist - Master	209	204	212	204
Psychologist - Doctorate	365	357	387	395
Psychologist - Doctorate - Temporary License				12
Psychologist - Trainee				57
Psychotherapists	359	563	779	617
Radiologic Technologist (Radiography)	506	585	546	601
Radiologic Technologist (Radiography) TEMP				1
Radiologic Technologist Limited License				13
Radiation Therapy	41	48	51	66
Radiation, Nuclear Medicine	58	75	62	70
Radiation, Limited Licensure	14	16	12	
Registered Appraisal Management Companies - Branch Office				2
Registered Appraisal Management Companies - Main Office				78
Real Estate Appraiser-State Licensed	68	68	52	54
Real Estate Appraiser- State Trainee	36	22	5	7
Real Estate Appraiser-Cert Residential	107	131	126	130
Real Estate Appraiser-Cert Residential Trainee				2
Real Estate Appraiser-Cert General	125	140	133	149
Real Estate Appraiser-Cert General Temporary License				14
Real Estate Appraiser-Cert General Trainee				2

**Appendix L: Licensees By Profession  
For Fiscal Years 2007 through 2010**

Profession	FY07	FY08	FY09	FY10
Real Estate Brokers	1,303	1,190	1,214	1,132
Real Estate Salespersons	1,401	1,251	1,259	1,134
Real Estate Offices - Main and Branch	481	551	609	520
Real Estate Offices - Sole Proprietor				232
Respiratory Care Practitioner	268	332	299	247
Respiratory Care Practitioner - Student				9
Clinical Social Workers	799	808	895	921
Tattooist	48	60	67	55
Tattooist - Apprentice				24
Tattooist - Permanent Cosmetic				1
Tattooist - Shop				17
Body Piercing & Tattooist Operator	70	72	81	16
Body Piercing & Tattooist Shop	76	75	18	21
Body Piercing & Tattooist - Apprentice				3
Body Piercing Shop				2
Body Piercing - Apprentice				10
Veterinarians	490	567	542	591
<b>TOTALS</b>	<b>48,356</b>	<b>55,103</b>	<b>54,463</b>	<b>56,853</b>
PNR = Previously Not Regulated				

**Appendix M: Receipts/Expenditures By Profession  
For Fiscal Years 2008 through 2010**

	Fiscal Year 08		Fiscal Year 09		Fiscal Year 10	
	Receipts	Expenditures	Receipts	Expenditures	Receipts	Expenditures
Accountancy	147,640	151,232	31,045	99,621	154,530	88,062
Architect	11,510	65,419	163,845	54,095	13,110	58,181
Barber/Cosmetology	363,238	272,737	50,060	287,017	579,860	277,907
Chiropractic	3,935	36,148	85,960	24,964	4,335	26,625
Dental	307,560	144,137	24,695	115,454	317,185	117,226
Engineer	183,015	171,436	243,285	120,976	43,278	183,840
Funeral Service	78,110	42,981	4,800	54,270	91,396	38,151
Land Surveyor	3,240	41,942	88,690	26,585	4,120	40,056
Mental Health, Allied*	27,135	66,202	165,630	81,295	27,140	79,007
Nursing	1,644,880	1,090,264	2,613,063	1,429,738	681,723	1,678,172
Optometry	1,020	22,373	53,315	12,557	2,465	16,170
Osteopath	8,670	29,398	78,571	15,991	10,075	16,163
Pharmacy	477,948	299,106	121,245	312,892	534,950	213,995
Private Detective	34,225	70,682	121,750	88,793	29,690	54,650
Psychology	129,340	62,059	8,355	52,626	131,595	42,427
Radiologic Tech.	12,700	44,444	76,860	37,647	8,695	38,514
Real Estate Appraiser	32,215	72,053	114,345	36,447	34,935	56,356
Real Estate Comm.	466,455	250,585	35,000	192,764	388,172	170,198
Veterinary	14,750	58,409	131,275	52,104	13,540	56,218
Advisor Groups	307,449	329,937	371,011	266,861	342,065	289,484
Administrative Penalties <sup>†</sup>	***	***	25,125	43,089	106,940	90,351
<b>GRAND TOTAL</b>	<b>4,255,035</b>	<b>3,321,544</b>	<b>4,607,925</b>	<b>3,405,786</b>	<b>3,519,799</b>	<b>\$3,631,753</b>

\*Includes Mental Health Counselor, Marriage Family Therapist, Psychotherapist

<sup>†</sup> Administrative Penalties Paid during the fiscal year as part of a disciplinary action

\*\*\* Administrative Penalties have not been reported in this format in previous fiscal years

Advisor Groups include the following professions: Acupuncturists, Athletic Trainers, Auctioneers, Crematories, Dietitians, Electrologists, Hearing Aid Dispensers, Midwives, Naturopathic Physicians, Nursing Home Admin., Occupational Therapists, Optician, Physical Therapists, Psychoanalysts, Respiratory Care Therapists, Social Workers, Tattooists, and Body Piercers. The operational costs of these professions is combined pursuant to 3 V.S.A. § 124.

**Appendix N: Roster of Board/Commission/Advisor Members  
As of November 2010**

		<u>APPOINTED</u>	<u>EXPIRES</u>
<b>Board of Public Accountancy</b>			
	Lee M. Spivey Jr.	Chair	4/9/2009 12/31/2013
	Cairn G. Cross	Member	1/2/2006 12/31/2010
	John C Borch	Member	4/9/2009 12/31/2013
	Joshua Parlow	Member	1/1/2010 12/31/2014
	Thomas Shortle	Member	6/2/2010 12/31/2014
<b>Acupuncturist Advisors</b>			
	Daniel A. Sachs	Member	1/1/2008 7/31/2013
	Elizabeth Fukushima	Member	1/1/2008 12/31/2013
<b>Allied Mental Health Practitioners Board</b>			
	Marilyn Louise Turcotte	Chair	1/1/1998 12/31/2008
	Paul J Sahba	Member	6/4/2003 12/31/2010
	Marjorie Ann Trombly	Member	2/20/2007 12/31/2010
	Edmund Fischer	Member	5/8/2007 12/31/2010
	Tammy Lee Austin	Member	9/16/2009 12/31/2014
<b>Board of Architects</b>			
	Edward Wolfstein	Chair	6/13/2001 12/31/2009
	Frank M Guillot	Member	6/5/2007 12/31/2012
	Arnold John Aho	Member	4/14/2009 12/31/2013
	Janet Stackpole	Member	4/14/2009 12/31/2013
	Ingrid Nichols	Member	6/19/2009 12/31/2013
	Jennifer R. Arbuckle	Member	6/19/2009 12/31/2013
<b>Athletic Trainer Advisors</b>			
	Todd Neuharth	Member	5/17/2005 12/31/2015
	Michael Landsberg	Member	6/1/2009 5/31/2015
<b>Auctioneer Advisors</b>			
	Thomas M Broughton	Member	7/1/2006 10/31/2011
	Duane E Merrill	Member	8/1/2007 7/31/2012
<b>Board of Barbers &amp; Cosmetologists</b>			
	Madonna D Commo	Chair	10/10/2008 12/31/2012
	Ruth M Comeau	Member	2/26/2009 12/31/2013
	Marsha Descheneau	Member	1/1/2010 12/31/2014
	Donna Hendee	Member	1/1/2010 12/31/2010
	Judith Wernecke	Member	5/4/2010 12/31/2014
<b>Boxing Advisors</b>			
	Richard H. Bernstein, MD	Member	3/9/1993 4/30/2008
	Edwin D Patterson	Member	4/1/2007 3/31/2012
<b>Board of Chiropractic</b>			
	Charles Foster	Chair	2/13/2004 12/31/2013
	Denise Natale	Member	4/26/2001 12/31/2011
	Anne Valliere	Member	10/1/2004 12/31/2011
	Jean Peterson	Member	6/25/2009 12/31/2011
	Palmer Peet	Member	1/27/2010 12/31/2014

**Appendix N: Roster of Board/Commission/Advisor Members  
As of November 2010**

			<u>APPOINTED</u>	<u>EXPIRES</u>
<b>Clinical Social Worker Advisors</b>				
	Maureen Claire Wilson	Member	7/28/2003	7/27/2013
	Gale H Golden	Member	4/14/2009	5/1/2014
<b>Alcohol and Drug Abuse Counselor Advisors</b>				
	William R Cote	Member	1/1/2001	1/31/2011
	Carolyn A. Prescott	Member	1/1/2005	1/31/2011
<b>Board of Dental Examiners</b>				
	Edward P. Pantzar	Chair	2/15/2007	12/31/2011
	Gertrude Hodge	Member	4/12/2000	12/31/2013
	Linda G. Retchin	Member	2/20/2001	12/31/2010
	Richard Avery Dickinson	Member	2/26/2003	12/31/2012
	Raymond McCandless	Member	8/4/2003	12/31/2012
	John C Langfeldt	Member	1/1/2005	12/31/2014
	John Francis Lavoie	Member	1/12/2006	12/31/2015
	Katherine Ann Silloway	Member	1/21/2009	12/31/2013
	Joanne Bugbee	Member	11/25/2009	12/31/2014
	Randall Miller	Member	7/27/2010	12/31/2015
	Dixie Vallie	Member	7/27/2010	12/31/2015
<b>Dietitian Advisors</b>				
	Priscilla Roberts Carpenter	Member	7/1/1997	6/30/2010
	Laura K. Biron	Member	5/20/2003	12/31/2013
<b>Electrology Advisors</b>				
	Nancy Cameron	Member	8/1/2005	7/31/2010
<b>Board of Funeral Service</b>				
	John T Coffin	Chair	5/21/2001	12/31/2010
	Lyndon B Mann	Member	2/20/2007	12/31/2011
	Peter Beck	Member	2/20/2007	12/31/2014
	Ercel Harvey	Member	4/3/2009	12/31/2014
	Robert Covey	Member	12/31/2009	12/31/2014
<b>Hearing Aid Dispenser Advisors</b>				
	Bernie Sage	Member	7/1/2005	8/31/2010
	David R. Charnock, MD	Member	9/1/1996	8/30/2007
	Sandra Duncan Farnum	Member	5/1/1998	4/30/2011
<b>Landscape Architects Advisors</b>				
	Jim Donovan	Member	7/1/2010	6/30/2015
	Gail Henderson-King	Member	7/1/2010	6/30/2015
<b>Board of Land Surveyors</b>				
	Shane B Clark	Chair	1/9/2003	12/31/2013
	Dorothy Hayden	Member	12/15/2003	12/31/2010
	Jonathan R. Abts	Member	1/26/2007	12/31/2010
	Charles E Rockwell	Member	2/25/2009	12/31/2013
	Debra Mithoefer	Member	3/29/2010	12/31/2012
	Timothy O'Meara	Member	11/12/2010	12/31/2014
	Timothy Short	Member	11/12/2010	12/31/2014

**Appendix N: Roster of Board/Commission/Advisor Members  
As of November 2010**

			<u>APPOINTED</u>	<u>EXPIRES</u>
<b>Midwife Advisors</b>				
	Stephen Genereaux	Member	6/12/2002	12/31/2009
	Mary Lawlor	Member	1/25/2001	12/31/2009
	Erin Ryan	Member	1/1/2004	12/31/2009
<b>Motor Vehicle Racing Advisors</b>				
	Harmon Dragon	Member	12/31/2006	12/31/2011
	Bernard Champney	Member	1/1/2007	12/31/2012
	Wayne Demar	Member	1/1/2008	12/31/2013
<b>Board of Nursing</b>				
	Ellen Williams Leff	Chair	2/25/2009	12/31/2013
	Alan Weiss	Member	6/28/2001	12/31/2009
	Kenneth Wayne Bush	Member	2/1/2005	12/31/2009
	Deann P Welch	Member	3/10/2006	12/31/2010
	William G White Jr.	Member	10/29/2007	12/31/2011
	Deborah Swartz	Member	11/20/2007	12/31/2011
	Jeanine Marie Carr	Member	1/1/2008	12/31/2012
	Sandra J Norton	Member	1/9/2008	12/31/2012
	Donarae B Metcalf	Member	1/9/2008	12/31/2012
	John W Todd	Member	9/14/2009	12/31/2013
<b>Occupational Therapist Advisors</b>				
	John Joseph Barry	Member	5/2/2003	12/31/2013
	Pauline H Migneault	Member	5/5/2005	12/13/2013
<b>Board of Private Investigative &amp; Security Services</b>				
	Robert E Edwards	Chair	5/29/2003	12/31/2010
	James R Eckhardt	Member	3/8/2007	12/31/2014
	Michael Patrick Jennings	Member	2/27/2008	2/27/2012
	Emma J Pudvah	Member	1/1/2009	12/31/2013
	Robert Wernecke	Member	11/12/2010	12/31/2013
<b>Board of Professional Engineering</b>				
	Michael H Quaid	Chair	3/31/2003	12/31/2011
	Bonnie Giuliani	Member	8/1/2004	12/31/2014
	William E Atkinson	Member	11/27/2006	12/31/2011
	Robert F Kischko	Member	1/1/2009	12/31/2013
	Katherine E Hill	Member	1/1/2009	12/31/2013
<b>Board of Psychological Examiners</b>				
	Richard W Root	Chair	2/1/2005	12/31/2014
	Steven R Lewis	Member	1/1/2002	12/31/2011
	Deborah J. Wallis	Member	4/6/2007	12/31/2009
	Michael Doyle	Member	12/3/2007	12/31/2014
	Susan Jan Belville	Member	11/23/2010	12/31/2013
<b>Psychoanalyst Advisors</b>				
	Michael J. Conforti	Member	1/1/1997	11/30/2011
	Donald R Ferrell	Member	12/1/2006	11/30/2011

**Appendix N: Roster of Board/Commission/Advisor Members  
As of November 2010**

			<u>APPOINTED</u>	<u>EXPIRES</u>
<b>Physical Therapist Advisors</b>				
	Leonie A Nelson	Member	2/1/2003	12/31/2013
	David W Scribner	Member	7/1/2008	6/30/2013
<b>Board of Real Estate Appraisers</b>				
	Ami C Milne-Allen	Chair	5/4/2005	12/3/2009
	Anne K Bernhardt	Member	9/18/2006	12/31/2013
	Steve M Rocheleau	Member	1/28/2009	12/31/2013
	Robert Wernecke	Member	1/11/2010	12/31/2015
	Heidi Hayward Urish	Member	7/27/2010	12/31/2015
<b>Real Estate Commission</b>				
	Maretta A Hostetler	Chair	10/22/2004	12/31/2014
	Claire M. Porter	Member	9/24/2004	12/13/2011
	Elizabeth Alexandra Wilkel	Member	2/7/2005	12/31/2014
	Herbert S Beggs	Member	3/21/2006	12/13/2010
	Gloria Rice Esq.	Member	1/1/2009	12/31/2013
	Michelle K Gosselin	Member	2/6/2009	12/31/2013
	Thomas Prindiville	Member	4/1/2010	12/31/2014
<b>Respiratory Care Advisors</b>				
	Gregory J. Ward	Member	4/16/2007	4/16/2012
	Robert St. Pierre	Member	4/16/2007	4/16/2012
<b>Board of Radiologic Technology</b>				
	Jane Alsofrom	Chair	4/27/2010	12/31/2014
	Carla A. White	Member	5/7/2004	12/31/2011
	Donna Ann Holbrook	Member	10/6/2005	12/31/2012
	Thomas J Harty	Member	1/26/2007	12/31/2012
<b>Board of Pharmacy</b>				
	Julia A. Eaton	Chair	1/1/2009	12/31/2013
	Jeffrey P. Firlik	Member	3/24/2005	12/31/2009
	Emma J Pudvah	Member	1/9/2008	12/31/2012
	Earl W. Pease	Member	1/9/2008	12/31/2012
	Larry Labor	Member	4/10/2008	12/31/2010
	Steven M. Vincent	Member	1/1/2009	12/31/2013
	Judith Wernecke	Member	7/1/2010	12/31/2015
<b>Tattooing/Body Piercing Advisors</b>				
	Anita Licata	Member	9/1/1996	8/30/2007
	Walter W Henshaw	Member	8/1/1997	7/31/2010
	Kenneth A Saxe	Member	3/1/2002	4/30/2012
<b>Board of Veterinary Medicine</b>				
	Mark A. Basol	Chair	3/15/2009	12/31/2013
	Ronald S. Svec	Member	1/1/2002	12/31/2011
	Robert L. Bergman	Member	5/9/2003	12/31/2012
	Linda Johnston	Member	4/18/2005	31/2014
	Terry York	Member	3/12/2007	12/31/2012
	J. Drexel Wheeler	Member	4/27/2010	12/31/2013

